

# Four Winds West

## SUBDIVISION



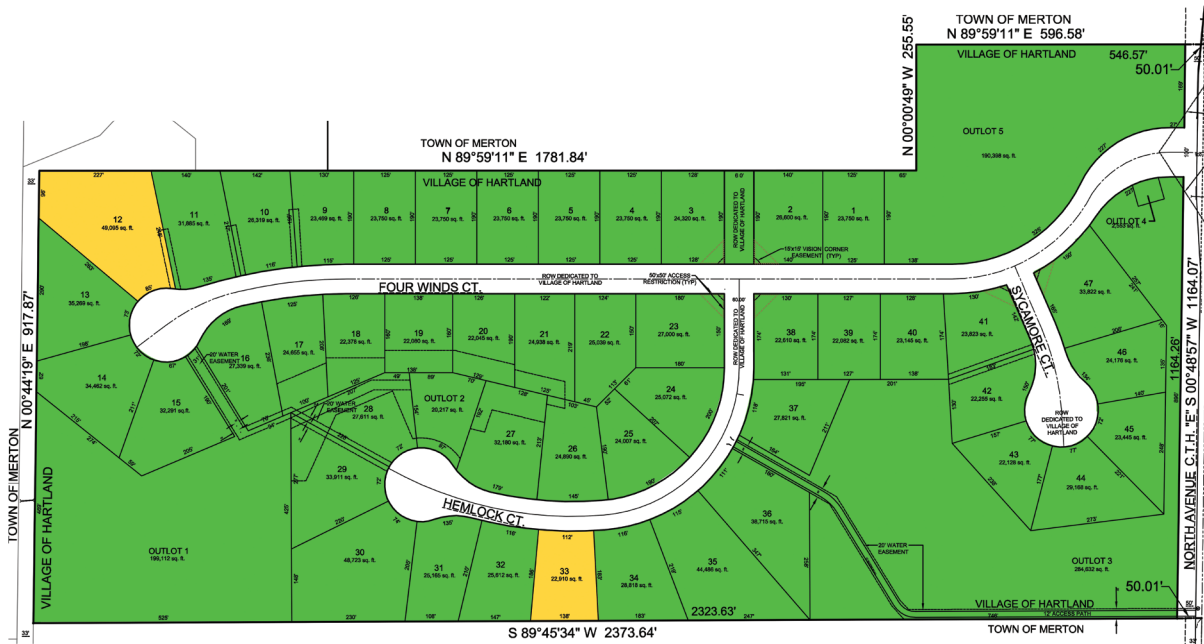
### Village of Hartland

Four Winds West is a single-family subdivision in western rural Hartland. It is comprised of 47 single-family lots, developed on 52 acres. There are mature Oak Trees, three ponds, a mesic prairie, a fenced in front entrance with over one thousand feet of landscaped berm, and two preserved wetlands. The subdivision is improved with vertical faced curb and gutter and village sidewalks and street lighting.

Four Winds West is in close proximity of the interstate, minutes away from many of the spectacular lakes in the area, along with championship golf courses, fine dining, entertainment, professional services and unique shopping.

**Directions from WI-16 – Exit #184 for Jungbluth Rd.** Drive east on Jungbluth Rd./Cty. Rd. KE. and drive 1.0 mile. Turn left/west onto Waukesha K and drive 1.5 miles. Turn right/north on Cty. Hwy. E and drive 0.2 miles to subdivision entrance on left/west.

**Directions from WI-164 – Drive west on Silver Spring Drive** for 5 miles. Turn south/left onto Cty. Hwy. E and drive 1.2 miles to subdivision entrance on west/right.



Lot	Lot Size	Exposure	List Price	Availability
12	49,095 Sq. Ft.	None	\$190,000	Available
33	22,910 Sq. Ft.	None	\$155,000	Available



allanbuilders.com  
866-569-2500



victoryhomesofwisconsin.com  
866-705-7000